



# INSTALLATION INSTRUCTIONS

## Part #2608

LS Swap Motor Mounts  
1970-1974 GM F-body

UMI Performance Inc,  
509 Hemlock Street  
Philipsburg, PA 16866  
814-343-6315  
support@umiperformance.com



### Applications

1970-1974 Chevrolet Camaro / Pontiac Firebird

#### Notes

Works well with 98-02 GM F-body, Holley 302-2, Moroso 20143, and other oil pans of similar dimensions.

### Included Parts

Part #	Quantity	Description
2608PA	1	Passenger Side Chassis Mount
2608DR	1	Driver Side Chassis Mount
2608CD	2	Engine Side Mount
1000003	6	3/8-16 x 1 1/4 Gr 8 hex bolt
1000006	12	3/8 Flat washer
1000008	2	1/2-13 x 4" gr8 hex bolt
1000013	2	1/2-13 Nylock
1000015	2	1/2 flat washer
1000035	8	M10 flat washer
1000044	8	M10 x 30mm 10.9 hex bolt
1000101	6	3/8-16 Nylock Nut

### Optional Items

UMI6410

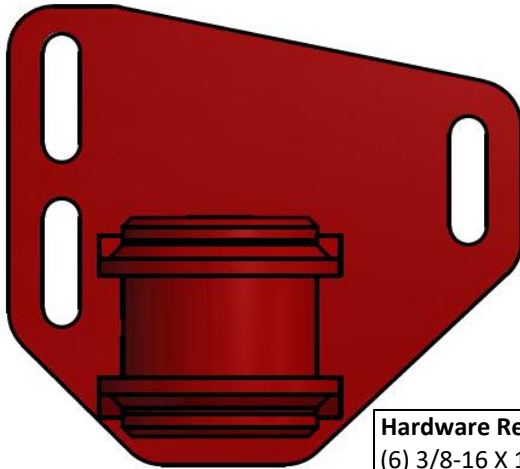
T56 Transmission Crossmember

## Installation

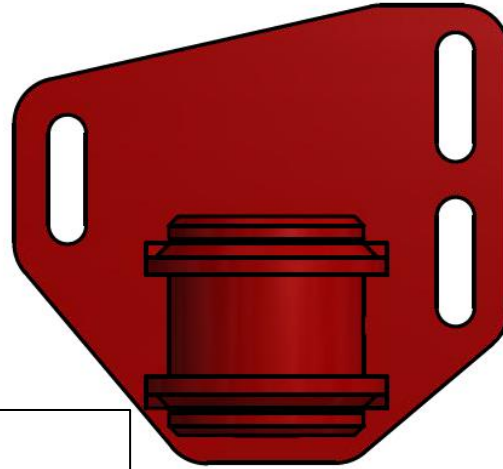
1. These mounts are intended to install an LS based engine into a 1970-1974 GM F body car.
2. Instructions assume the starting point to be a vehicle with no engine.
3. The chassis side mounts use the same cross member holes as the factory small block.
4. Install chassis mounts, leave bolts slightly loose until engine installation is completed. This allows for fine tune adjustments during engine installation. The mount is slotted for front to rear adjustment.

FRONT OF CAR

DRIVER SIDE



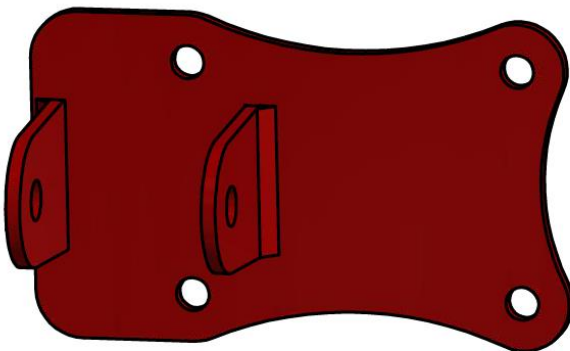
PASSENGER SIDE



**Hardware Required:**  
(6) 3/8-16 X 1 1/4 bolt  
(12) 3/8 flat washer  
(6) 3/8-16 nylock nut  
**Torque: 40 FT LB**

5. Install Engine side mounts. Final torque fasteners at this time. 45 ft lb.

FRONT



ENGINE MOUNT  
– SAME ON BOTH SIDES  
TABS TOWARD FRONT OF ENGINE

**Hardware Required:**  
(8) m10 x 30mm  
(8) m10 Flat washer  
**Torque: 45 FT LB**

6. Lower engine into car. It may be necessary to adjust the chassis side mounts to allow installation of the through bolts. This is completely normal. Once thru bolts are installed, use washer under nylock nut and torque through bolts to final spec, 65 ft lb.

**Hardware Required:**  
(2) 1/2-13 x 4" bolt  
(2) 1/2 flat washer  
(2) 1/2 -13 nylock nut  
**Torque: 65 FT LB**

7. Once engine is in final position, torque the chassis side mounts to 45 ft lb.
8. Installation complete.



**UMI Performance**  
**2608**  
70-74 F Body LS Swap Motor Mounts

509 Hemlock Street  
Philipsburg, PA 16866  
814.343.6315

***Proudly made in the U.S.A***

**Warranty Information**

UMI Performance warrants all UMI Performance products for a period of two (2) years from the original date of purchase.

This warranty is valid against defects in materials and workmanship for the two (2) year warranty period. It is not valid against defect resulting from, but not limited to:

Misuse and/or abuse, neglect or accident, Exceeding the item's design limits, Improper installation. Acts of God, including lightning, floods, earthquakes, fire or high winds. Damage in handling, including damage encountered during shipment.

This warranty is valid for the original purchaser of the UMI Product. Warranty is not transferable or valid for second ownership.

This warranty shall be considered void if the warranted product is in any way altered, adjusted, tampered with or defaced.

The two (2) year warranty does not apply to normal wear and tear (the gradual deterioration of an asset which results naturally from use and/or age, i.e. bearings, bushings, etc.).

Non UMI manufactured parts are not covered or valid under this UMI Performance warranty. UMI Performance cannot guarantee compatibility or performance of its products with other components used in conjunction with UMI Performance products.

UMI Performance cannot assume responsibility for any damages to UMI Products nor for claims for personal injury or property damage resulting from the use of UMI Performance products or the improper operation thereof or consequential damages arising from the products or use of the products.

UMI Performance two (2) year warranty excludes incidental charges incurred by the end user in the event of breakage (towing, labor, installation, etc.). By their very nature, competition suspension parts are continuously expected to exceed to their limits (either by race or road use). UMI suspension components are designed to withstand intense race conditions, although it is impossible to control the quality of installation or the varying conditions in which they are used.

This warranty supersedes all other warranties and may only be modified by statement in writing, signed by UMI Performance owners/principals.

All Warranties implied by law, including the warranties of merchantability and fitness for a particular purpose, are hereby limited to the warranty period herein and shall expire at the end of such period.