

INSTALLATION INSTRUCTIONS



1964-1972 GM A-Body

Quick Performance Coilover Bracket

PART NUMBER (PN): 4069

Technical Support

We strive to provide the utmost pre- and post-sales support for our products. Whether you just need upgrade advice, or assistance in adjusting or installing a product, our experienced support staff is always ready to help optimize your UMI product.

CHAT WITH A UMI PROFESSIONAL TODAY

Need installation advice or clarification on the instructions? Scan the QR code (right) to chat directly with a UMI Professional or use the contact information provided to talk to customer service.

Note: UMI social media accounts do not respond to customer service questions.



CONTACT CUSTOMER SERVICE

Hours: M-F 8:00-4:30 (EST)

Email: support@umiperformance.com

Call: +1 (814) 343-6315

Address: 509 Hemlock Street
Philipsburg, PA 16866

SOCIAL MEDIA

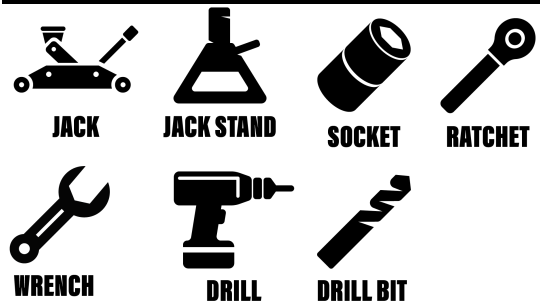
#umiequipped #umiperformance

@umiperformanceinc

Included Parts

Part Description	Quantity	PN
4069 Coilover brackets	1 set	4069
4057 upper shock mounts	1 set	4057-W
3048 Lower shock mount	1 set	3048FMA
4069-BK	1 BK	4069BK
Viking Coilover	1 set	C-2XX

Tools Needed



DISCLAIMER

UMI Performance shall not be held liable for any injuries or damages resulting from the improper installation of this product. It is the sole responsibility of the user to ensure that the product is installed correctly and in accordance with all applicable laws, codes, and regulations. The user assumes all risk and liability for any injuries or damages that may arise from the improper installation of this product. It is important to follow these steps carefully and use the proper tools to avoid damaging the vehicle or causing injury to yourself. If you are uncertain about any part of the installation process, it is recommended that you seek the assistance of a professional mechanic.

STEP 1: Job Prep

Organize and layout all necessary parts and hardware prior to beginning the installation process. Carefully review the components and tools required to ensure that all necessary items are present. Once confirmed, proceed to disassembly

STEP 2: Lifting The Vehicle.

Using the properly rated jack and Jack stands, Lift the vehicle using the factory lift pads on the frame. Also support your Quick Performance rear end using jack stands.

STEP 3: Disassembly.

A) Start by Removing the current springs and shocks if any on the vehicle.

STEP 4: Reassembly

A) Install upper brackets in factory shock holes using 5/16 bolts. Now is the time to install your Umi part number **4058/4065** shock tower brace if you purchased it as well. (Fig: 1)

B) Drill the 3rd hole using the bracket as a guide. Tighten 5/16 bolts to 14 ft-lbs or moderately tight with normal hand tools. (Fig: 2)

C) Moving down to the lower bracket you must remove the lower trailing arm bolt.

D) Install coilover bracket using factory shock bolt hole location, and supplied hardware. Reinstall lower trailing arm bolt to desired location along with the anti rotation bolt supplied. (Fig: 3)

E) Install the lower shock double shear mount to the coilover mount with supplied hardware. We like to set it in the middle to start out until you figure out your desired ride height. (Fig: 4)

NOTE: When installing your lower shock mount, it is very important to determine which hole location is best for your preferred ride height and . Lower the car to your preferred ride height and measure eye to eye. If your eye to eye measurement does not fall within your shock specifications, a longer or shorter shock is required. The lower coilover mount can be adjusted up or down to make sure your shock is installed at the correct length. You can call a UMI Tech to help assist you on the decision of the correct shock length.

C209-W > 13-7/8 to 15-1/8

C211-W > 15-1/8 to 16-1/2

C213-W > 15-5/8 to 17-1/8

C219-W > 16-5/8 to 18-3/8

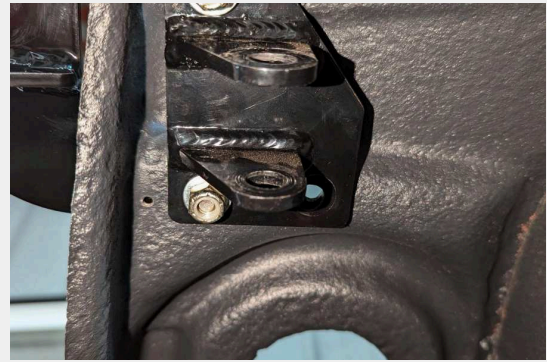


Fig: 1



Fig: 2



Fig: 3

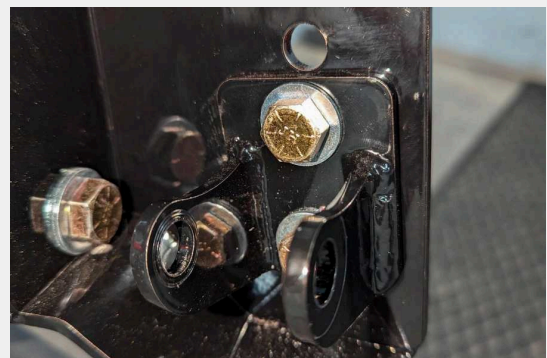


Fig: 4

INSTALLATION INSTRUCTION

F) Assemble the coilovers. (For more instructions on coilover assembly see APPENDIX A.

G) Install the coilover to the upper mount using the supplied hardware. (Fig: 5)

H) Lift Quick Performance Rear up to align and install the bottom of the shock. (Fig: 6)

I) Go back and double check to make sure the hardware is tight.

FIGURES FOR REFERENCE

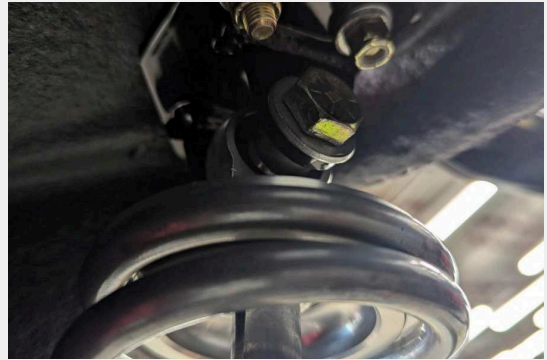


Fig: 5



Fig: 6

APPENDIX A: Coilover Assembly

A) Remove the coilover shocks from their packaging (Fig 1) and install the upper and lower bearing assemblies. Using snap ring pliers, install one snap ring in the designated groove on top and bottom of the coilover. Push bearings into shock eyelets and install remaining snap rings. (Fig 2.)



Figure 2: Assembled bearing

B) Apply nickel based anti seize lubricant to threads of the coilover shock. Thread the lower perch nut onto the shock with the flat side facing down followed by the upper perch nut. (Figure 3.)

C) Place thrust bearing set onto the top perch followed by the spring.

D) Install the spring cap onto the Spring and seat it into the top eyelet. (Fig 2.)



Figure 1: Bearing Installation



Figure 13: Perch Nuts, Thrust Bearing installed