

INSTALLATION INSTRUCTIONS



1964-1972 A-Body

GM A-Body Front Sway bar relocation kit

PART NUMBER (PN): 4068

Technical Support

We strive to provide the utmost pre- and post-sales support for our products. Whether you just need upgrade advice, or assistance in adjusting or installing a product, our experienced support staff is always ready to help optimize your UMI product.

CHAT WITH A UMI PROFESSIONAL TODAY

Need installation advice or clarification on the instructions? Scan the QR code (right) to chat directly with a UMI Professional or use the contact information provided to talk to customer service.

Note: UMI social media accounts do not respond to customer service questions.



CONTACT CUSTOMER SERVICE

Hours: M-F 8:00-4:30 (EST)

Email: support@umiperformance.com

Call: +1 (814) 343-6315

Address: 509 Hemlock Street
Philipsburg, PA 16866

SOCIAL MEDIA

#umiequipped #umiperformance

@umiperformanceinc

Included Parts

Part Description	Quantity	PN
4068F Adapter mount	1	4068F
Hardware Kit	1	Hdwe

Tools Needed



JACK



JACK STAND



SOCKET



RATCHET



WRENCH

INSTALLATION INSTRUCTION

DISCLAIMER

UMI Performance shall not be held liable for any injuries or damages resulting from the improper installation of this product. It is the sole responsibility of the user to ensure that the product is installed correctly and in accordance with all applicable laws, codes, and regulations. The user assumes all risk and liability for any injuries or damages that may arise from the improper installation of this product. It is important to follow these steps carefully and use the proper tools to avoid damaging the vehicle or causing injury to yourself. If you are uncertain about any part of the installation process, it is recommended that you seek the assistance of a professional mechanic.

STEP 1:

Organize and layout all necessary parts and hardware prior to beginning the installation process. Carefully review the components and tools required to ensure that all necessary items are present. Once confirmed, proceed to disassembly.

STEP 2: Notice in Figure 1 how close the idler arm is to the sway bar. This kit is designed to move the bar forward to give additional clearance here.

STEP 3: Using a shop lift or a properly rated jack, lift the front of the car using the factory jack points and install jack stands under the frame.

STEP 4: Loosen the sway bar end links in such a manner as to take pressure off of the end link bushings. Figure 2



Figure 2

STEP 5: Now remove the sway bar clamp to frame bolts and let the bar hang down away from the frame at this point. Figures 3 & 4

FIGURES FOR REFERENCE



Figure 1



Figure 3

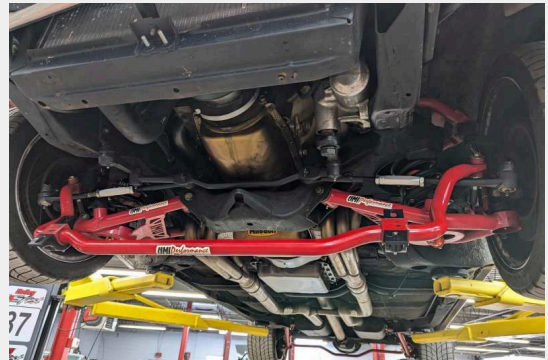


Figure 4

INSTALLATION INSTRUCTION

NOTE: Some chassis will have $\frac{3}{8}$ -16 threaded holes and be on appx 2- $\frac{3}{4}$ " center to center distance. Some will have 5/16-18 threaded holes and be on appx 2- $\frac{9}{16}$ " center to center of holes. Hardware is supplied to mount either way.

STEP 6: If your chassis has 5/16-18 holes in the frame from the factory and they are not damaged or you do not want to drill and tap them to the larger $\frac{3}{8}$ -16 thread then proceed with installing the relocation blocks to the frame as shown in Figure 5 with the provided 5/16-18x1- $\frac{1}{4}$ " bolts and flat washers.

Use the provided $\frac{3}{8}$ -16x1- $\frac{1}{4}$ " bolts and AN washers if frame has $\frac{3}{8}$ -16 thread from the factory or has been redrilled and tapped larger. This bolt goes into the recessed/counterbored hole in the block and will thread into the front hole in the chassis. Install on both sides.

STEP 7: Make sure the rear chassis hole is aligned side to side in the machined slot of the relocation block. Figure 6. Now tighten/ torque the front frame bolts in the recessed holes to **18-20** ft.lbs. If using 5/16" hardware. **30-35** ft.lbs. If using 3/8" hardware. Figure 7



Figure 7

STEP 8: Now raise the sway bar back into position and start the rear bushing clamp bolts through the clamp and relocation block into the rear frame hole. Do this on both sides. Again this will be a 5/16-18x1- $\frac{1}{2}$ " bolt and washer or $\frac{3}{8}$ -16x1- $\frac{1}{2}$ " bolt and AN washer depending on frame hole/thread size.

Do not fully tighten at this point. Figure 8

FIGURES FOR REFERENCE



Figure 5



Figure 6

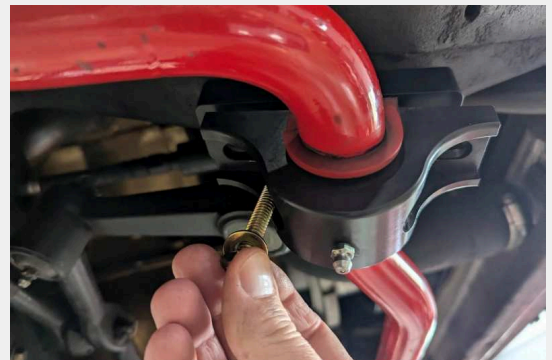


Figure 8

INSTALLATION INSTRUCTION

STEP 9: Start the front bolts that mount the sway bar bushing clamps to the relocation bracket at this time. They will be $\frac{3}{8}$ -16x1" bolts with AN washers. Move the bushing clamp into alignment with the relocation block and tighten this bolt to **30-35** ft. lbs. Figures 9 & 10

STEP 10: Now tighten the rear bushing clamp bolts on both sides that were not fully tightened previously, to **18-20** ft.lbs. If **5/16** bolts or **30-35** ft.lbs. If $\frac{3}{8}$ bolts. Figure 11



Figure 11

STEP 11: Your sway bar should be mounted to the chassis fully on both sides now as shown in Figures 12 & 13

FIGURES FOR REFERENCE

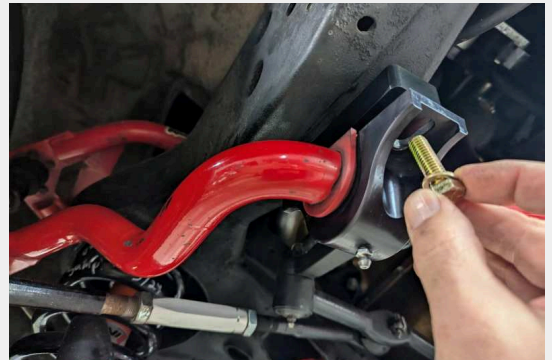


Figure 9

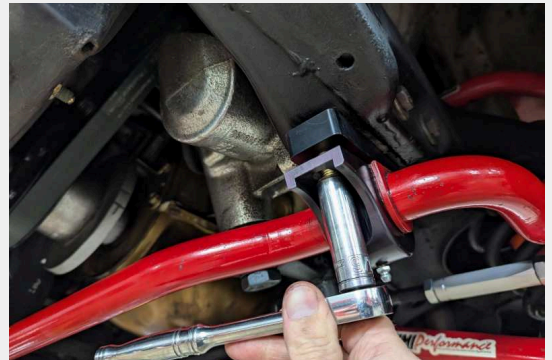


Figure 10

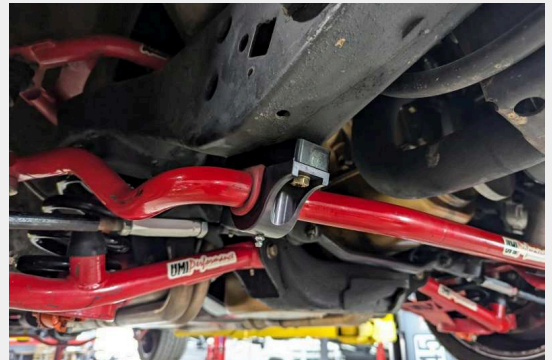


Figure 12

INSTALLATION INSTRUCTION

STEP 12: Now retighten the sway bar endlinks at the bushings that were loosened in **STEP 4**. Figure 14



Figure 14

STEP 13: The sway bar relocation kit is now fully installed as shown in Figure 15

You should notice a difference in clearance between the sway bar and idler arm now as shown in Figure 16

FIGURES FOR REFERENCE



Figure 13



Figure 15

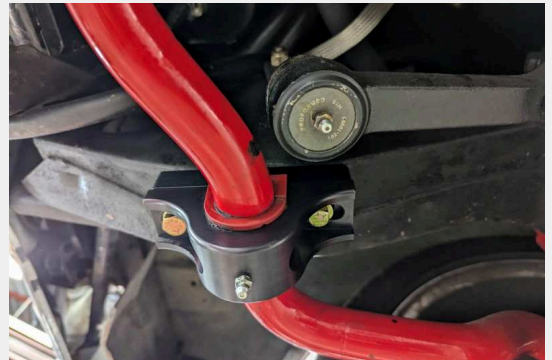


Figure 16